

# BRUSSELS EXPO

## Sustainability

At the Brussels Expo Convention Center, several policies and operating procedures are in place to ensure our efforts to be good stewards of the environment. These efforts focus on clean energy, the use of public transport, sustainable catering, selective waste management and the use of re-usable materials.



### CLEAN ENERGY

In 2022, we began to invest in a massive program of solar panels on the roofs of our Halls to source sustainable energy. We installed a total of 11 497 solar panels with a total capacity of 4713.77 kWp. Other projects on the theme of sustainability are currently active at Brussels Expo, such as rainwater management studies, the installation of 100 charging stations for electric vehicles, PLAGE (Plan for Local Action for Energy Use) and an internal working group on energy is in place to monitor these processes. When maintaining and updating our buildings, we seek to incorporate sustainable building techniques and the systematic replacement of regular lights by LED lights. We encourage the use of digital signage to reduce waste from single-use signage. Nowadays, almost all organizers of our Halls use digital displays for wayfinding, sponsorship, and event information.





## WATER AND ENERGY CONSUMPTION CALCULATIONS

For both, we have an energy monitoring platform called PICS («Process Instrumentation and Control Systems»). It allows us to map all consumption (ELEC, GAS, WATER) within our halls. It's a tool with a complete energy management solution. We also have at our disposal a building management system (BMS). This allows us to remotely monitor and control our HVAC installations and to regulate air conditioning ad hoc.



## SUSTAINABLE CATERING

The green approach extends to our catering services: our caterers serve most food and beverages with reusable crockery, flatware, and cups—a practice that aligns with the “zero plastics” initiatives of some meeting planners. We promote the use of Water bottle refill stations throughout the buildings. When we need to use single-use containers, products made from renewable sources have been our standard for many years. Currently we are steadily replacing the single-use containers with sustainable reusable tableware. Absolute cleanliness and hygiene of this reusable tableware are guaranteed in our on-site washing line







## SELECTIVE WASTE MANAGEMENT

The complete process of waste management at Brussels Expo includes selective collection, transport, disposal, recycling, monitoring, and regulating. Waste is separated into different categories such as glass, wood, paper, carton, plastic, inert materials, organic waste, glass, or hazardous waste according to the mandatory Waste and Environment ordinances of the City of Brussels.

### 1. PMD



**Allowed:** Plastic packaging: bottles, flasks, food trays, margarine tubs, pots, tubes, foils, bags, beverage capsules, ... **Metal packaging:** drink cans, tin cans, aerosols spray cans, aluminum plates, dishes and trays, metal lids and crown caps, beverage capsules, **Drink-** cartons.

**Not allowed:** Polystyrene foam - Other plastic objects e.g. boots, buckets, garden hose - Packaging of motor oil and lubricants, pesticides, fuels, adhesives, paints and varnishes, silicone sealants - Packaging with child-resistant fastenings. Packaging featuring one of these pictograms:  

### 2. PAPER-CARDBOARD



**Allowed:** Paper bags, cardboard boxes, magazines, newspapers, advertising, books, paper for writing and printing, bread bags, paper cups, ..

**Not Allowed:** Soiled or greasy paper and cardboard, cellophane, wallpaper, aluminum foil.

### 3. ORGANIC WASTE



**Allowed:** Food leftovers (including meat and fish), vegetables and fruit peelings, coffee grounds, tea bags, paper towels, expired food (without packaging).

**Not allowed:** Nappies, wood ashes, shells from eggs, nuts, oysters, mussels, litters, even the biodegradable ones, bones, carcasses, fish bones, kernels, compostable packaging.

### 4. RESIDUAL WASTE



Is household waste that cannot be re-used, is not recycled and does not fit any other waste sorting category.



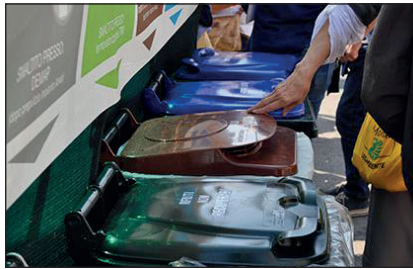
## 5. GLASS WASTE

Bottles, jars and other flasks made of glass.



## 6. HAZARDOUS WASTE

Chemical/Toxic waste identified by one of the following symbols on the packaging. Such as ink, acids, paint, solvents, plate coatings, batteries, motor oil, flammable liquid, combustible liquid, all aerosols (except empty cosmetic and food cans),..







## PUBLIC TRANSPORT

To promote sustainable commuting among staff and guests, we collaborate with regional transportation organizations to encourage use of public transit. Brussels Expo is across the street from 3 tramways and the subway station. This subway connects employees and visitors to the three main Brussels train stations in the heart of Europe. From these train stations it is very easy to travel by train all around Europe. Paris, London and Amsterdam are a mere two hours away by train. We highlight public transit options via our website, social media, employee materials, and information sent to our clients.

